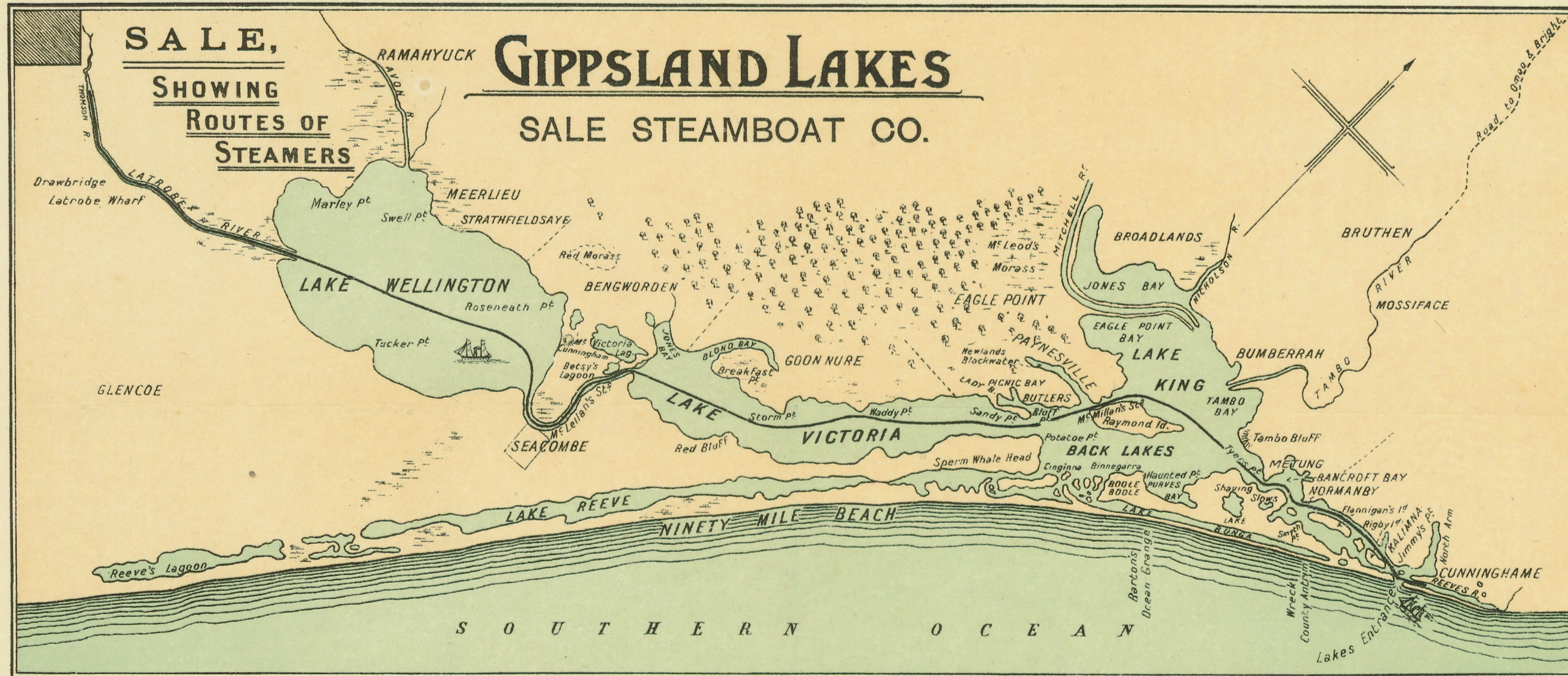


THE CHEAPEST AND BEST ROUTE via SALE TO SEE THE GIPPSLAND LAKES. EXCURSION FARES.

ROUTE OF STEAMERS

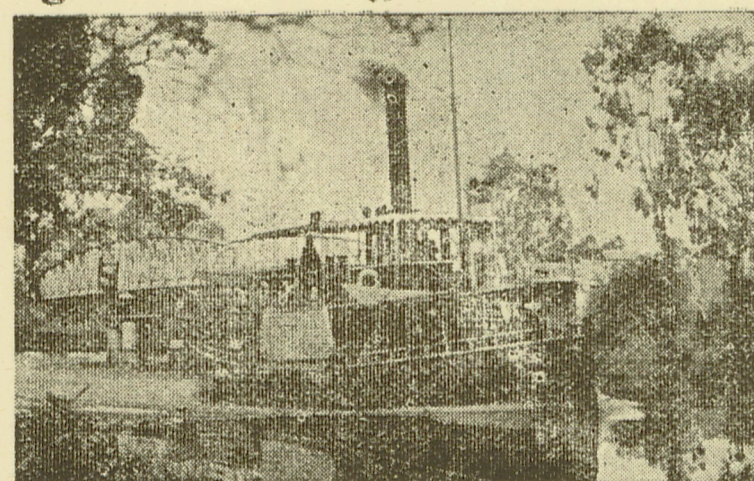
OMEO & DARGO.

- SALE WHARF TO SWING BRIDGE 3 Miles.
BRIDGE TO RIVER MOUTH 9 Miles.
ACROSS LAKE WELLINGTON 10 Miles.
ENTRANCE OF STRAITS TO HOLLAND'S 6 Miles.
HOLLAND'S TO PAYNESVILLE THROUGH LAKE VICTORIA 18 Miles.
PAYNESVILLE TO METUNG 8 Miles.
METUNG TO LAKES ENTRANCE THROUGH LAKE KING 8 Miles.

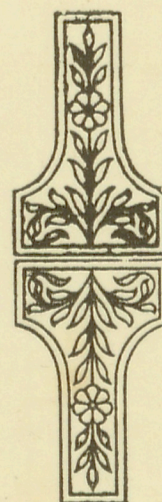


Summer Excursions
via Sale
Lakes Entrance
and
Nowa Nowa
to
Buchan Caves.

Coach and Motor
Services.



DAILY SERVICE TO GIPPSLAND LAKES.
FARES.—Single 8/-; Return 12/-



THE ROUTE OF THE SALE STEAMBOAT COMPANY'S STEAMERS OMEO AND DARGO IS THROUGH THE WHOLE OF THE GIPPSLAND RIVERS AND LAKES, STEAMERS LEAVING SALE AND THE LAKES ENTRANCE DAILY (Sundays excepted).

LEAVE SALE UPON ARRIVAL OF FIRST TRAIN FROM MELBOURNE, CALLING AT SEACOMBE, HOLLAND'S LANDING, PAYNESVILLE, METUNG, KALIMNA, NEW WORKS AND LAKES ENTRANCE.

LAKES ENTRANCE TO SALE, 8 a.m., ARRIVING AT SALE AT 3 p.m.

EXCURSION FARES, MELBOURNE TO LAKES ENTRANCE, RETURN, RAIL & STEAMER COMBINED, FIRST, 42/- SECOND, 32/-

STEAMER FARES, SALE TO ENTRANCE-RETURN 12s; SINGLE 8s.

Reece & Co. Pty. Ltd, Print, Sale.

822-8
GMFS
191-?

8/6/1055 3597